



The Treasure Hunt

Can Kit and Sam follow the correct map?
Join them as they meet Fran, the pirate, and
go hunting for the buried treasure.

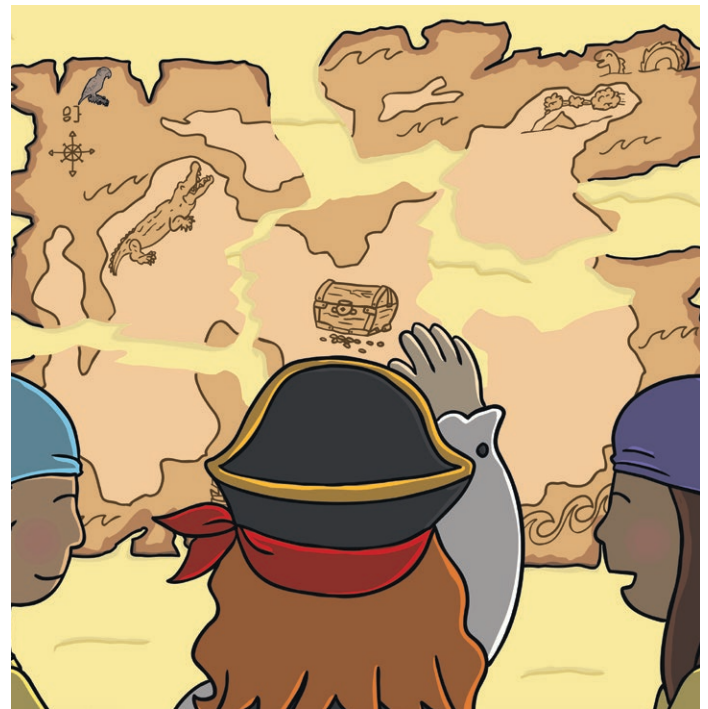
The Treasure Hunt



A 'Let's Read Together!' Book



Q6: Why do you think that Fran's
family would be so happy?



The friends discovered that the map actually
belonged to Fran's great grandfather. Fran had
the missing piece of the map, which she placed in
the middle. The treasure was in Asia.



Kit and Sam visited Fran to show her pieces of the treasure map that Ben had found on the beach. It was delightful to see their friend again.



Fran thanked Sam and Kit for all their help. "It was our pleasure," replied Sam as Fran handed them each a gleaming golden coin – their own piece of pirate treasure.



Q1: Who did the treasure maps originally belong to?

Q2: How did the friends complete the treasure map?

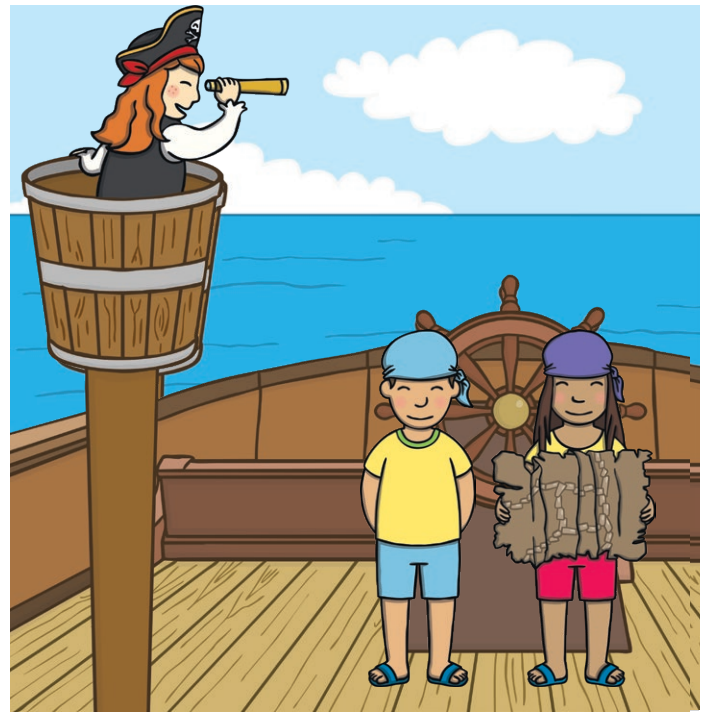


Fran and Sam dug in the sand to uncover a glittering treasure box and a scroll. Fran beamed with pleasure. "My family will be so pleased!" she said.



Q4: Which part of the island did the ship stop at?

Q5: Why could Sam be sure they had reached the right place?



Fran spotted a secret clue – her unusual family mark was in the corner of the map. “We’re going on a treasure hunt!” yelled Fran from the crow’s nest.



Q3: Why did Fran have to shout to Kit and Sam?

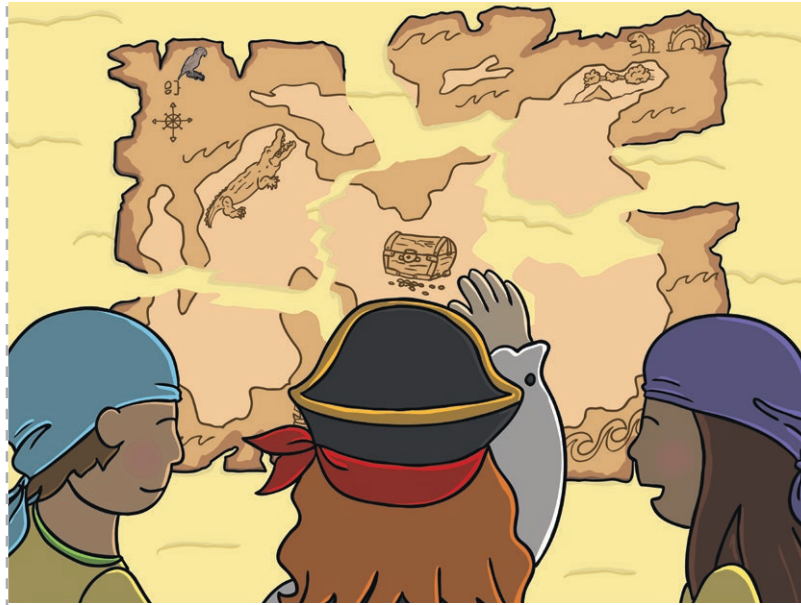


When the ship reached Leisure Cove, the friends carefully counted their strides from the enormous palm tree. Sam was sure they were in the right place as she spotted the pirate mark on one of the trees.



The Treasure Hunt

The Treasure Hunt



A 'Let's Write Together!' Book











